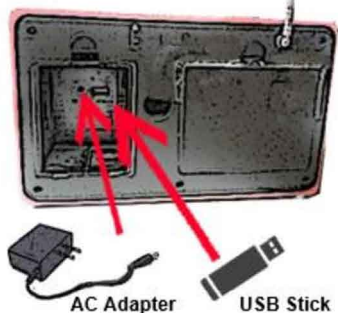


User Guide

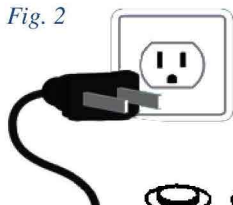
Quick Start

Fig. 1



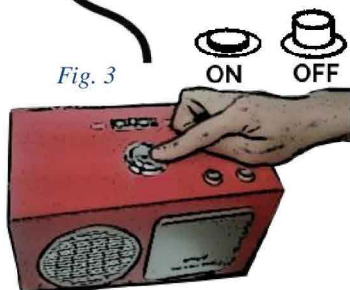
Remove the Port Compartment door (back, left side) and take out both the AC adapter and USB stick. Insert the AC Jack and the USB stick into the ports. See Fig. 1.

Fig. 2



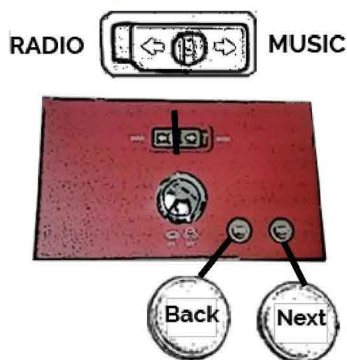
Insert AC plug into an outlet. Fig. 2.

Fig. 3



Press the large 1-inch ON/OFF button to play pre-loaded MUSIC. See Fig. 3.

Fig. 4



User Control Buttons. Fig. 4.

Located on the top of the player:

- RADIO / MUSIC Mode switch
- BACK / NEXT buttons

Hidden Controls

Remove the front Control Panel to access the hidden buttons. The Control Panel helps ensure settings are not easily changed for a more consistent entertainment experience.

Fig. 5

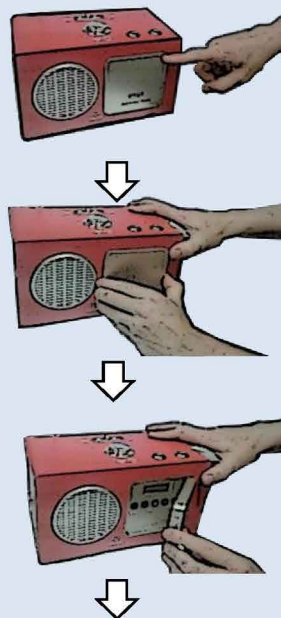


Fig. 6



MUSIC MODE

1. Ensure the RADIO / MUSIC switch is towards MUSIC (Fig. 4). You will automatically hear songs (MP3 format) pre-installed on the 8GB USB memory stick.
2. The USB stick is pre-loaded with 75 American Classics from the 20'th Century in MP3 format. For better user enjoyment, add or delete songs most familiar to the user. 20-40 songs may be sufficient, however, download as many as 1,000 songs /audio books if desired.
3. The only hidden control setting for MUSIC mode is the volume. Adjust the volume level for MUSIC by pressing VOLUME -/+ buttons. See Fig. 6.
4. Press NEXT button to skip to the next song, or BACK for the previous song. Songs always play in same order, which is preferred by care recipients.
5. Only MP3 file format is supported. Convert other file formats, such as M4A, to MP3. Try this link to convert most file formats: <https://support.apple.com/en-us/HT20431>

NOTE: There are 10 volume levels (two levels / bar) seen at top right of the LCD display. The RADIO volume is usually set at a different level compared to the MUSIC volume level.


RADIO Mode

When Radio mode is switched ON, the last preset radio station you were listening to will start to play.

The external antenna can improve reception of certain FM stations, but not AM. The AM antenna is inside the radio. To improve AM reception on certain channels, try moving the unit to another area of the room, rotate the unit or place closer to a window.

Storing Radio Stations

- 1. Obtain a list of up to 10 preferred AM and/or FM radio stations from the user. You can store one or two stations only, or as many as ten.

- 2. Remove the Control Panel cover (Fig. 5), and find the first station you want to store, selecting AM or FM and then TUNE -/+.
- 3. To store this station, press and hold the NEXT button located on top of the unit for about 3 seconds (Fig. 4). The first station set will be S 1 (Setting #1), show on display as:  Repeat step 2-3 to store more stations, up to S 10 (Setting #10).
- 4. Press the VOLUME -/+ buttons to the desired radio level. (Fig. 6)
- 5. The BACK and NEXT buttons will cycle through stored channels. (Fig.4)

Technical Specifications

| | |
|------------------------------|---|
| Ac Power Adapter: | 9VAC 1000 mA : Exclusively for this product. Do not plug in with other adapters |
| Power: | AC 120 volts AC/AC adaptor in Portable : Insert 6 x C-size batteries for portability |
| User Controls: | ON/OFF, RADIO/MUSIC,BACK/NEXT |
| Hidden Controls: | AM/FM, TUNE (-/+) & VOLUME (-/+) |
| Radio Station Storage Memory | Up to 10 stations |
| Headphone: | Insert jack into port in front of unit. |
| Power Consumption: | 300 mA ~ 1A at 9V |
| Amplifier: | 3W Class D mono audio player AM/FM radio with antenna |
| Dimensions: | 10" w x 6 1/8 " h x 5.75" d, 4 LB (26 x 16 x 15 cm, 1.8 KG) |

Technical Support

TECHNICAL SUPPORT or WARRANTY SERVICE, DO NOT RETURN THE UNIT TO RESELLER, CONTACT US, THE MANUFACTURER FIRST:

Please call 1-833-237-4675 Ex.1 or Email support@smpltec.com or visit www.smpltec.com/radio-music-player for Q & A.

USA: SMPL TECHNOLOGY, 340 Royal Poinciana Way, Suite 317/317, Palm Beach Florida 33480
Canada: 3-100 Hanlan Road, Woodbridge, Ontario L4L 4V8

Warranty Specifications

WARRANTY:
Simpl Technology LLC warrants the SMPL Radio & Music Player (to be free of defects in material and workmanship) for twelve (12) months from the date of purchase. Within the warranty period, the warranty is limited to the repair or replacement of defective parts only at the discretion of Manufacturer.

The warranty may be void if the Music Player is damaged or destroyed as a result of one or more of the following willful abuse or neglect; modification of the unit; using alternative power supplies to that provided; using of organic solvents, strong acids or petroleum-based solvent / ammonia.

SAFETY INSTRUCTIONS:
The device shall not be exposed to dripping or splashing or near a bathtub. The device should be situated away from heat sources such as radiators. Heat registers, stoves or other appliance (including amplifiers) that produce heat. The power supply cords should not be routed so that they are not likely to be walked on or pinched by items placed upon or against them or chewed by pets. To avoid the risk of electric shock, do not remove the cover of the apparatus. There are no user serviceable parts inside. Do not operate this product if the main lead is damaged.

COMPLIANCE:
Operation is subject to the following three conditions: 1) This device may not cause harmful interference. 2) This device must accept any interference received, including interference that may cause undesired operation. Changes or modifications to the electronics in the device by an unauthorized dealer or technician will void the warranty.

WARNING:
This product contains chemicals known to the State of California to cause cancer and birth defects or other reproductive harm.

