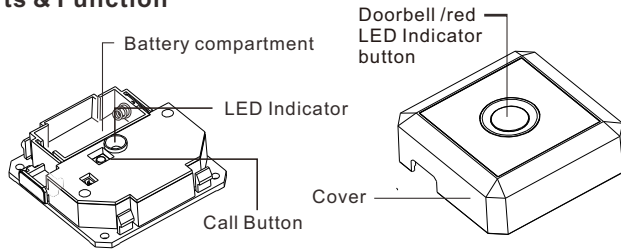


USERMANUAL

DB100T

Parts & Function

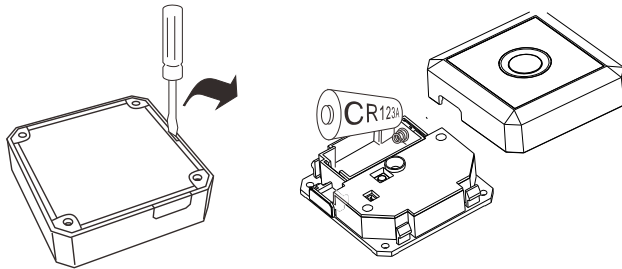


Power

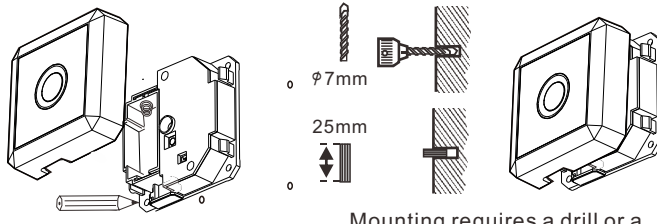
This unit uses a long life Lithium CR123A battery.

Battery installation

1. Open the front cover using a small screw driver or with your hand by putting pressure on two sides & pulling up.
2. Install a CR123A battery into the battery compartment



Installation

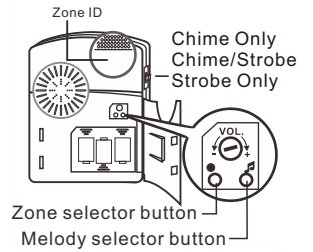


Mark the mounting holes on the wall using a pencil

Mounting requires a drill or a screwdriver for the holes to mount the transmitter. Important; do not mount on metal surfaces can damage transmitter

CODE PAIRING & MELODY SELECTION

- Step 1: Insert the battery into the transmitter to be used.
- Step 2: Insert batteries into the receiver to be used (chime unit).
- Step 3: Enter pairing mode for the receiver (chime unit). Press & hold the ● zone selector button for 3 seconds. The LED in zone #1 will flash.
- Step 4: Press the ● zone selector button again to move to the zone you wish to pair with. Press the ♪ melody selector button to scroll through the melodies. Once you hear a melody you prefer, do not press any button as the melody is set for that zone.
- Step 5: Once the zone and melody are selected, press the call button on the transmitter once to pair. If successful, the receiver (chime) will generate a short tone. Press the ● zone selector button to exit pairing mode, the system is ready to use.



To cancel any alert on the remote receiver press the reset button. The reset button is located on the back of the receiver behind the flasher.

Test the transmitter

To test the transmitter, press the Doorbell /red LED Indicator button once. The LED indicator will light up red & will send a signal to the receiver.

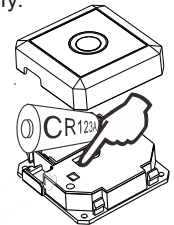
Battery low indication

If a zone LED light is blinking, that indicates that the battery is low for this transmitter. You must replace the battery as soon as possible. If the white flash at the top of the chime blinks every 5 seconds, this indicates the receiver batteries are very low. When you see the white flash every 5 seconds, you must replace the batteries of the receiver immediately.

Code Conflict

If the transmitter coding is the same as another transmitter, you must change the code. When you change the code, you will need to pair/connect the transmitter again. Refer to step 3 through step 5 from the CODE PAIRING & MELODY SELECTION listed above.

Open the cover, Press & hold the Doorbell /red LED Indicator button. Insert the battery while holding the Doorbell /red LED Indicator button for 5 seconds. The red LED will flash 5 times when a new code is generated.



Notes

To cancel any alert on the remote receiver press the reset button. The reset button is located on the back of the receiver behind the flasher.

For Customer Support Please Contact:

Silent Call / MyAlert

Sales@Silentcall.com / 1-800-572-5227

scdirectsales.com for DIY instructional videos and User Guides

This equipment has been tested and found to comply with the limits for a Class B digital device, pursuant to part 15 of FCC Rules. These limits are designed to provide reasonable protection against harmful interference in a residential installation. This equipment generates, uses and can radiate radio frequency energy and, if not installed and used in accordance with the instructions, may cause harmful interference to radio communications. However, there is no guarantee that interference will not occur in a particular installation. If this equipment does cause harmful interference to radio or television reception, which can be determined by turning the equipment off and on, the user is encouraged to try to correct the interference by one or more of the following measures:

- * Reorient or relocate the receiving antenna.
- * Increase the separation between the equipment and receiver.
- * Connect the equipment to an outlet on a circuit different from that to which the receiver is connected.

This device complies with part 15 of the FCC rules. Operation is subject to the following two conditions: (1) This device may not cause harmful interference, and (2) this device must accept any interference received, including interference that may cause undesired operation.

Note: Modifications to this product will void the user's authority to operate this equipment.



RoHS

R&TTE

