



# TV LISTENING SYSTEM

## BeHear PROXY + HearLink PLUS

# Quick Start Guide



[support@alango-behear.com](mailto:support@alango-behear.com)

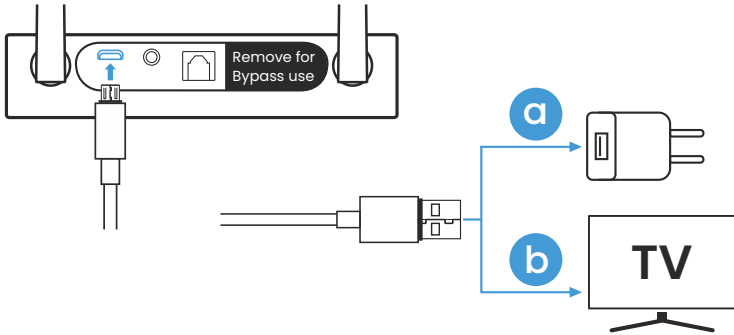


[www.alango-behear.com](http://www.alango-behear.com)

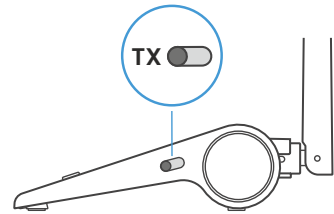
# A

## Getting Started

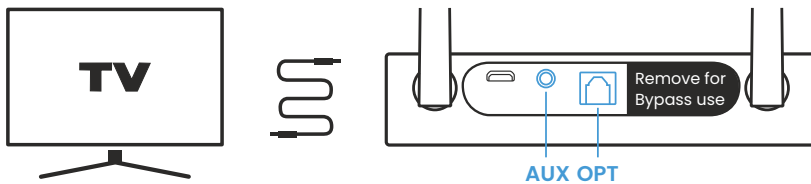
1. Connect HearLink PLUS to a power outlet (a) or the TV set's USB port (b) using the supplied USB power cable. HearLink PLUS will turn ON automatically.



Verify that the mode switch is set to **TX** position



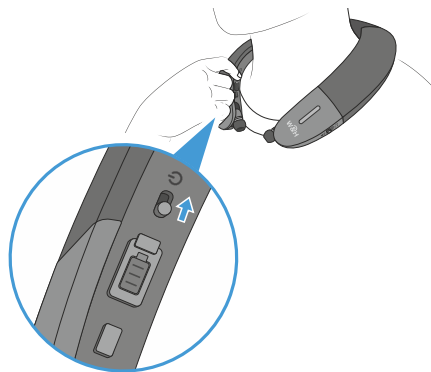
2. Connect the HearLink PLUS TX port to the TV (or other media device) via the supplied optical or 3.5mm audio cable. The active connection type is indicated by the illuminated text (**OPT** or **AUX**).



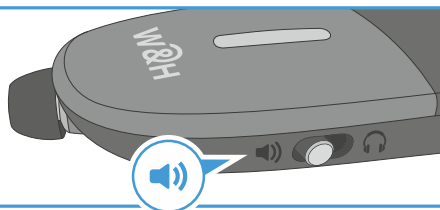
Make sure to remove the plastic protectors from the optical cable terminals prior to insertion.



3. Turn on the BeHear PROXY neck speaker by sliding up the Power button and holding it until the unit vibrates and the LED turns light blue. A voice prompt will be played.



Verify that the mode switch is set to **Loudspeaker** position.



4. Successful connection of the BeHear PROXY is indicated by the illuminated **A** on the HearLink PLUS panel. The **LL** is illuminated to indicate that the Low Latency APTX-LL Bluetooth CODEC is being used.



*If the automatic connection is delayed, briefly shift up the BeHear PROXY Power button to reconnect it to the HearLink PLUS transmitter.*

## 1. HearLink PLUS Manual Control



Short press to toggle audio **Play/Pause**.



Press to **increase** the volume. A tone is played when maximum volume is reached.



Press to **decrease** the volume. A tone is played when minimum volume is reached.

## 2. BeHear PROXY Remote Control

Manage audio play using controls on the neck speaker.



Short press to toggle **Play/Pause** audio.



Press to **increase** the volume. A tone is played when maximum volume is reached.

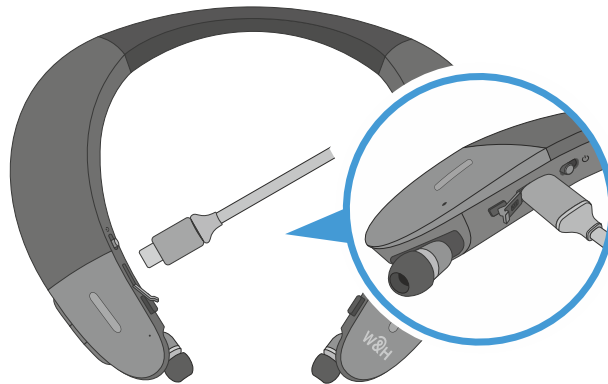





Press to **decrease** the volume. A tone is played when minimum volume is reached.

1. Charge the neck speaker directly from a wall outlet or computer USB port.


The LED indicator is red during charging and turns green when the neck speaker is fully charged.

Full charging takes up to 3 hours.



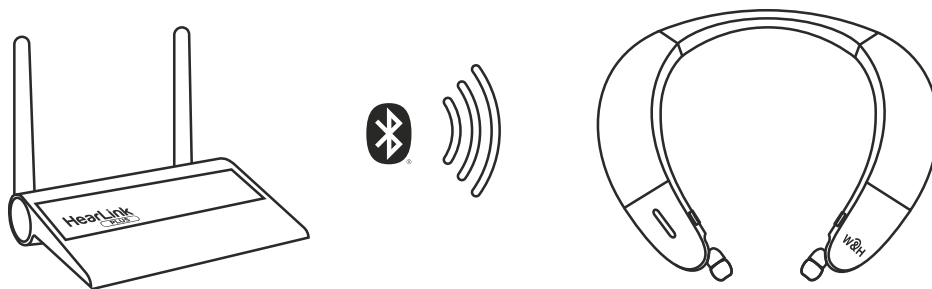
2. If you do not hear audio:
  - ▶ Ensure that the 'audio out' port of your TV connected to the HearLink PLUS is active. For some devices you need to enable the audio output. Refer to your device's user manual.
  - ▶ Toggle the Play/Pause  button on the BeHear neck speaker or  button on the HearLink PLUS.
3. If the automatic connection is delayed, briefly shift up the BeHear PROXY Power button  to reconnect it to a previously paired HearLink PLUS transmitter.

4. To restore connection between BeHear PROXY and Hearlink Plus transmitter:

- ▶ Place HearLink PLUS into pairing mode with a short press on its  button.

When in pairing mode the **TX** indicator light will flash quickly.

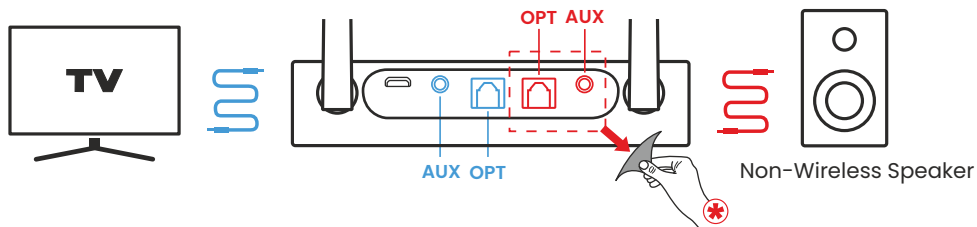
- ▶ Turn OFF BeHear PROXY.
- ▶ Shift its power switch up and hold it until the voice prompt says: "Pairing mode active" and the LED blinks in alternating red and blue.
- ▶ Place the BeHear PROXY neck speaker close to the HearLink PLUS device.



- ▶ When pairing is complete (after 5-30 seconds) **TX** will be illuminated on the HearLink PLUS panel.


Successful connection of the BeHear PROXY neck speaker is indicated by the illuminated **A** or **B** on the HearLink PLUS panel.

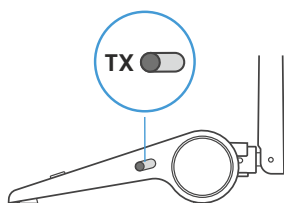
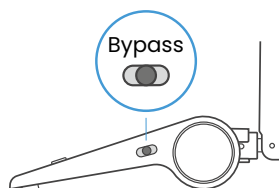
5. Use the HearLink PLUS **Bypass** mode to maintain the existing interfaces between your TV and peripheral audio equipment.



\* Remove the sticker to expose the **RX** ports.

Remove protection sticker from the rear panel and connect the Hearlink PLUS **TX** port to the TV via the optical or 3.5mm audio cable, and the **RX** port to a speaker or other peripheral audio equipment using the same type of cable as the **TX** port connection.

To passthrough HearLink PLUS set its Mode switch to **Bypass** position, indicated by .



To restore connection with the BeHear PROXY neck speaker set the Mode switch to **TX**.

6. More details about Hearlink Plus and BeHear PROXY can be found in their user manuals.



[www.alango-behear.com](http://www.alango-behear.com)



[support@alango-behear.com](mailto:support@alango-behear.com)